



## Red Building, Ludgate Hill, Manchester

£1,100 PCM

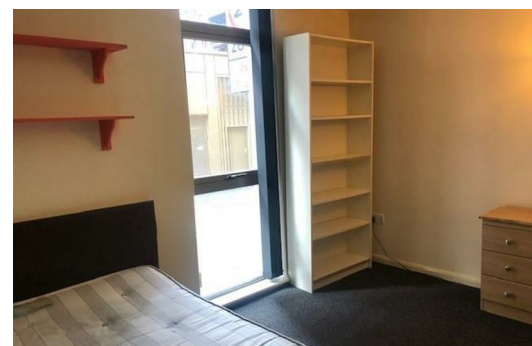
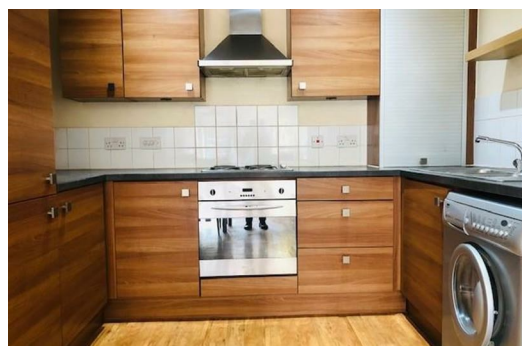
Welcome to Red Building, apartments with a contemporary design that are right on the edge of the action in Manchester city centre.

This ground-floor apartment combines modern convenience with the advantages of a central city location. Featuring high-quality fixtures and finishes, it exudes style and sophistication. The generous open-plan kitchen and lounge create the perfect space for entertaining or relaxing on a quiet Sunday. Boasting two double bedrooms and two bathrooms, including a convenient en-suite to the master bedroom, this apartment is certain to attract interest.

The location couldn't be more spot-on if it tried. Smack-bang within the hub of the city, Red Building is just minutes away from Manchester Victoria and the historic (but ultra-lively) Northern Quarter. You're right in the thick of it all - what more could you ask for?

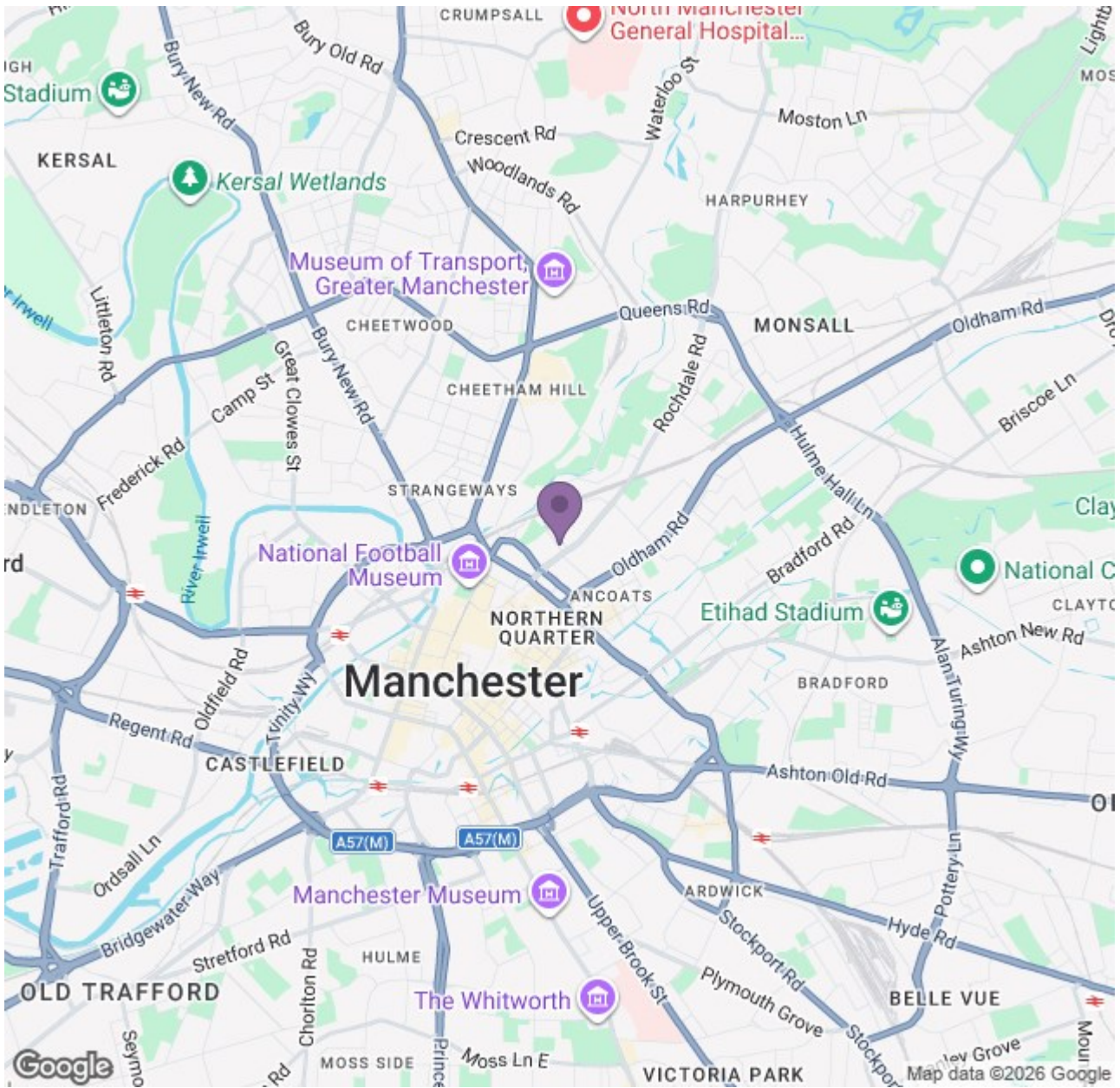
Now we've got you hooked, give us a call to arrange your viewing. This apartment won't be around for long. Trust us. And just so you know, the pictures for this apartment are for marketing purposes only. Internal fixtures, fittings and furnishings may vary.

Available Now  
Deposit: £1,260  
Council Tax Band: D  
Furnished



# Ascend

Built on higher standards



Energy Efficiency Rating		Environmental Impact (CO <sub>2</sub> ) Rating	
Current	Target	Current	Target
74	82	G	G
<small>England &amp; Wales</small>		<small>England &amp; Wales</small>	

# Ascend

Built on higher standards